

Montpellier

Castel



Cranfords are honoured to present Montpellier to the local market situated just a stones throw from Cobo Bay and the beautiful West Coast beaches of Guernsey. This extremely versatile property offers an abundance of options for a multitude of family needs and requirements by way of the main house being up to 7 bedrooms including a dedicated disability bedroom with fitted hoist, wet room and it's own independent entrance in addition to the internal entrance. This light and airy, large family home oozes character, space and presents further scope for one to make it their own. In addition to the main house is a newly built 2 double bedroom with en-suites bungalow also having it's own garden areas and veg patch giving even further opportunity to accommodate family etc or to simply have as an asset that yields an attractive monthly income. Externally, Montpellier offers ample parking for both the main house and the bungalow, multiple sheds and a sunny side and rear patio and lawned garden area perfect for entertaining

- ✓ 9 Bedrooms
- ✓ Ample Parking
- ✓ 5 Bathrooms
- ✓ Has A Two Bedroom Bungalow
- ✓ New Windows
- ✓ Electrical Update
- ✓ Generous Living Space
- ✓ True Move-in Condition
- ✓ Walking Distance To Cobo Bay
- ✓ Flexible Living
- ✓ Family Home
- ✓ Domestic TRP 420

after a beautiful day on the beach. This property really needs to be viewed in person to fully appreciate all aspects of this terrific family home.



Accommodation

Summary of Accommodation

Porch: Entrance Hall: Kitchen/Diner: Living Room: Conservatory: Rear Porch: Utility: Side Entrance: Open Plan Living Area: Sun Room: 2 WC's: 5 Bathrooms: 9 Bedrooms

Accommodation Comprises

Porch

6' x 4'.

Entrance Hall

19' x 6'.

Kitchen/Diner

23' x 12'. Appliances include 5 ring gas Classic 110 hob, Rangemaster double oven, Hotpoint washing machine, Indesit tumble dryer, Samsung fridge/freezer & Cooke & Lewis dishwasher

Living Room

23' x 12'.

Conservatory

11' x 7'.

Rear Porch

7' x 5'.



Utility

14' x 7'. Appliances include Beko fridge & Sovereign freezer.

Side Entrance

8' x 6'.

Bedroom 2

15' x 14'.

Wet Room

7' x 7'.

First Floor

Landing

17' x 5'.

Bedroom 7

11' x 7'.

Bedroom 6

11' x 8'.

Bedroom 5

11' x 11'.

Bedroom 3

12' x 12'. Fitted wardrobes.

Bathroom

9' x 8'.

Second Floor

Landing

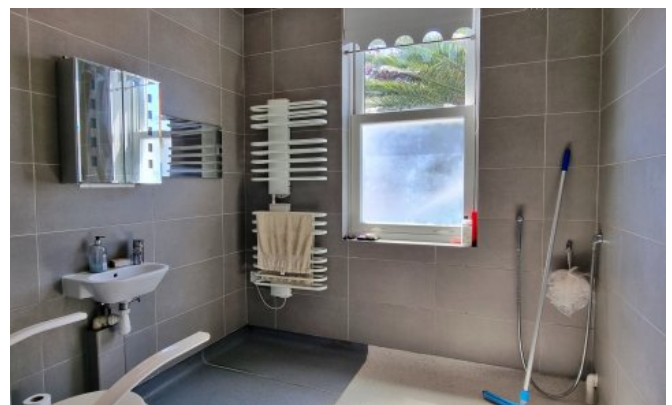
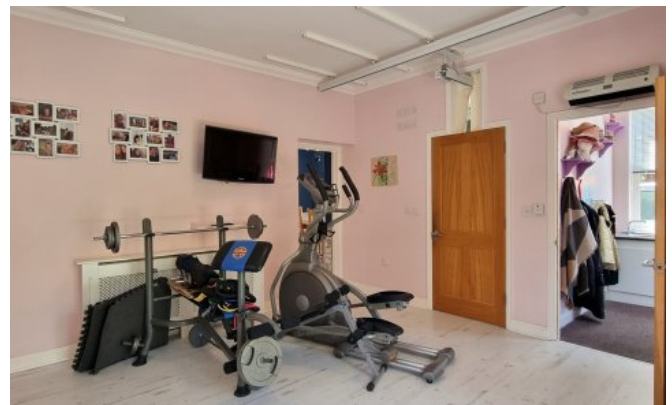
6' x 6'.

Bedroom 4

16' x 9".

Bedroom 1

18 x 14'.



En-Suite Shower Room

11' x 6'.

Bungalow

Open Plan Living

17'3" x 13'8". Appliances include Zanussi double oven, four ring Hotpoint gas hob, Bosch washing machine and LG fridge/freezer.

Bedroom 1

11'5" x 11'.

En-Suite

6'5" x 5'.

Bedroom 2

12'8" x 10'.

En-Suite

6'2" x 3'.

Sun Room

13'8" x 9'.

W/C

6' x 3'3".

Further Information

SERVICES

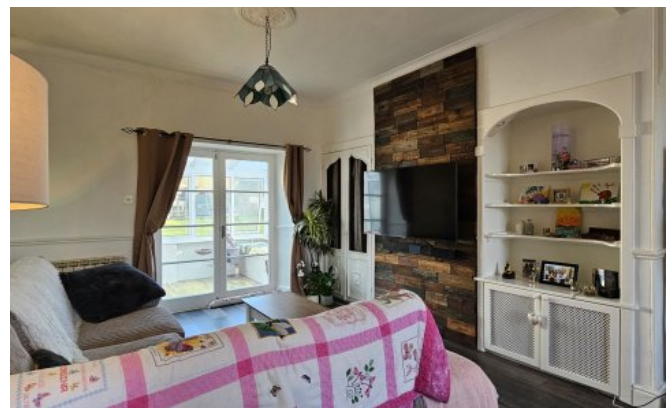
Mains electricity, water and drainage. Oil fired central heating, Oil fired underfloor heating throughout rear bungalow.

PRICE INCLUDES

Floor coverings, curtains/blinds, and light fittings. Appliances as detailed.

POSSESSION

By arrangement.



VIEWING

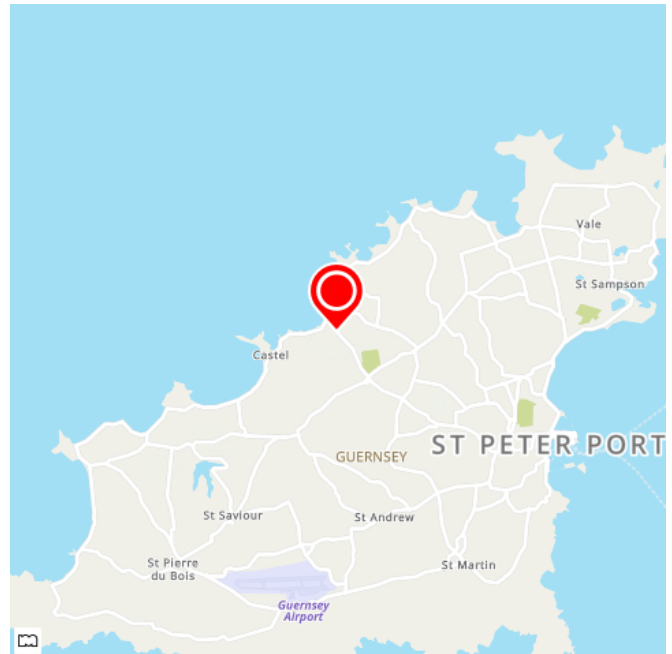
Strictly by appointment.

PLEASE NOTE

If the recipient of these details should be party to negotiations or actions which seek to preclude, or are contrary to, the interests of CRANFORDS ESTATE AGENCY LTD, as selling agents, they may be liable for any fees which would otherwise have been due to CRANFORDS ESTATE AGENCY LTD.

These particulars do not constitute any part of an offer or contract. No responsibility is accepted as to the accuracy of these particulars or statements made by our staff concerning the above property. Any intending purchaser must satisfy himself to the correctness of such statements and particulars. All negotiations to be conducted.





For clarification we wish to inform prospective purchasers that these sales particulars have been prepared as a general guide. They are not an offer of contract, nor part of one. You should not rely on the content therein or on statements, in writing or by word of mouth, provided by us in respect of the property, its condition or its value. We have not undertaken a detailed survey, nor tested the services, appliances and specific fittings. Room sizes are approximate and should not be relied upon for carpets and furnishings. Cranfords Estate Agents Limited.

