

Woodville

St Sampson



Offered to the local market is Woodville, a three double bedroom, Thermo-boarded Bungalow positioned opposite Douit lane on Rue Sauvage. This well presented family home offers a good sized living area having a bright and airy lounge and dining area that leads onto a modern kitchen and the rear Patio. The property boasts future proof living with two ground floor double bedrooms and family bathroom with an additional master bedroom and en-suite bathroom on the first floor as per the loft conversion done in recent years. Externally, Woodville boasts ample parking, a garage plus work shop and a paved patio and lawned area perfect for entertaining. Woodville really has much to offer and must be seen to be fully appreciated.

- ✓ 3 Bedrooms
- ✓ Ample Parking
- ✓ Enclosed Garden
- ✓ Good Sized Bedrooms
- ✓ Attractive Price In View of Onward Buy
- ✓ 2 Bathrooms
- ✓ Fully Insulated Throughout
- ✓ Move-In Condition
- ✓ Commercial Building On Site
- ✓ Domestic TRP 180

Accommodation

Summary of Accommodation

Entrance Hall: Lounge/Diner: Kitchen: Family
Bathroom: 3 Bedrooms: One En-Suite:

Accommodation Comprises

Entrance Hall

16'1" x 3'9".

Lounge/Diner

24'1" x 12'8".

Kitchen

15'6" x 8'8". Appliances include Hotpoint 4 ring electric
hob, Hotpoint single oven, Hotpoint dish washer and
Hotpoint fridge/freezer.

Bathroom

7'3" x 5'7".

Bedroom 2

12'7" x 12'3".

Bedroom 3

12'7" x 12'3" x 9'3".

First Floor

Bedroom 1

14'8" x 12'7". Max, eaves storage.

En Suite

8'9" x 8'1". Max.

Further Information

SERVICES

Mains water, electrics and drainage. Oil central
heating.



PRICE INCLUDES

Floor coverings, curtains/blinds, appliances and light fittings.

POSSESSION

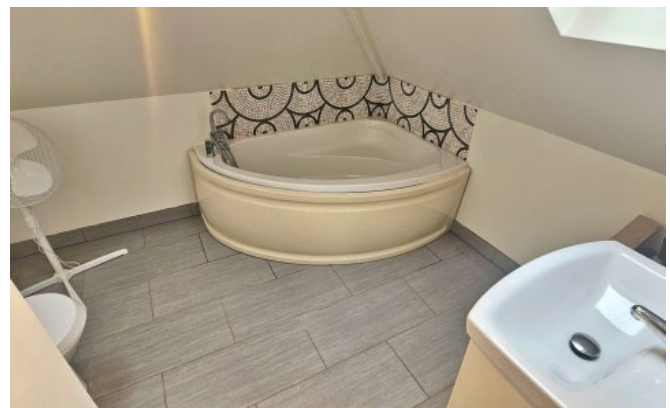
By arrangement.

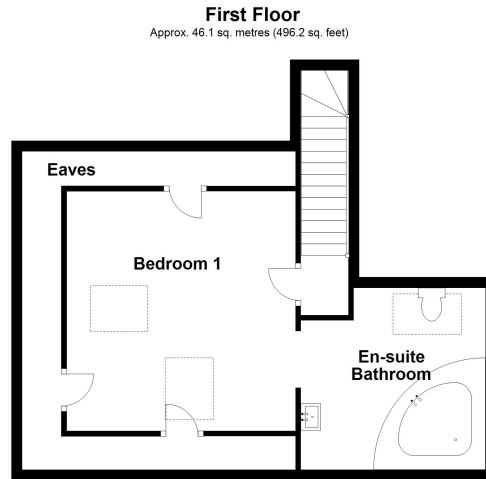
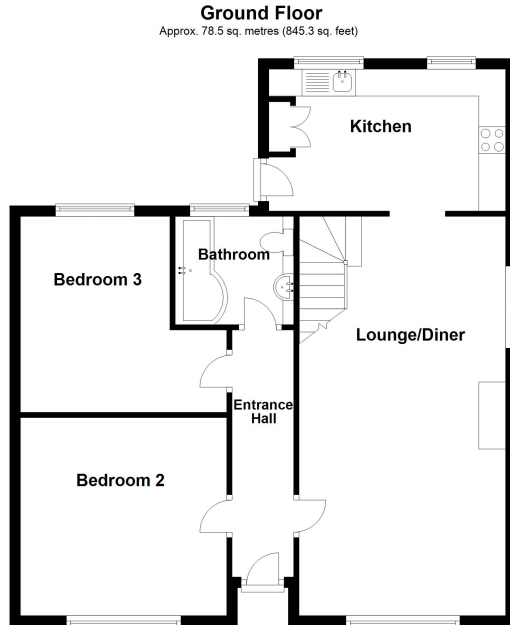
VIEWING

Strictly by appointment.

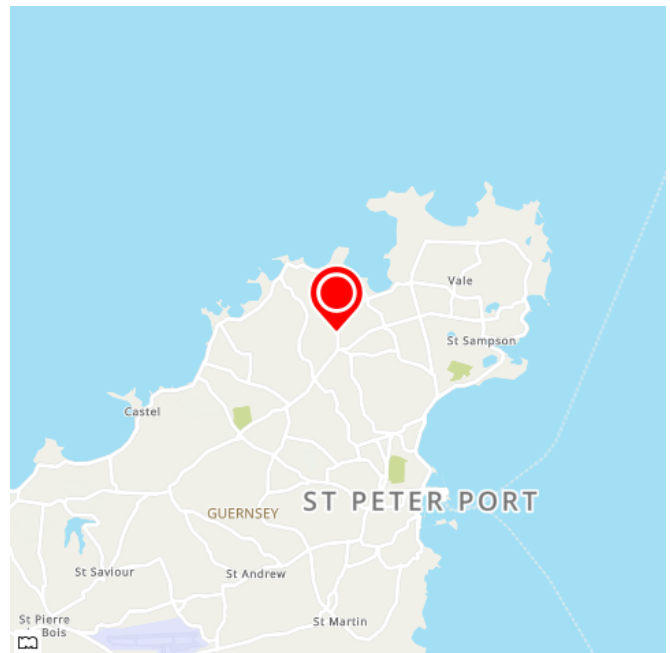
PLEASE NOTE

If the recipient of these details should be party to negotiations or actions which seek to preclude, or are contrary to, the interests of CRANFORDS ESTATE AGENCY LTD, as selling agents, they may be liable for any fees which would otherwise have been due to CRANFORDS ESTATE AGENCY LTD.





Total area: approx. 124.6 sq. metres (1341.5 sq. feet)



For clarification we wish to inform prospective purchasers that these sales particulars have been prepared as a general guide. They are not an offer of contract, nor part of one. You should not rely on the content therein or on statements, in writing or by word of mouth, provided by us in respect of the property, its condition or its value. We have not undertaken a detailed survey, nor tested the services, appliances and specific fittings. Room sizes are approximate and should not be relied upon for carpets and furnishings. Cranfords Estate Agents Limited.



