

Avalon

Castel



Cranfords are pleased to offer Avalon to Guernsey's local market situated on a quiet lane just inland from the West coast of Cobo and Grande Rocque. This 5 bedroom family home has been upgraded over recent years, including the latest connectivity wiring and a balcony. In addition to this good-sized family home is a self-contained one double bedroom dower unit that was built only a few years ago and to current building standards offering a whole range of versatile living situations and potential for an added income if required. Externally, the property is low maintenance having a rear patio garden and entertainment area. To the front of Avalon you find ample parking from a gravel driveway which completes this great package. Call us today on 243878 to book your viewing!

- ✓ 6 Bedrooms
- ✓ Ample Parking
- ✓ Move-In Condition
- ✓ Domestic TRP 194
- ✓ 3 Bathrooms
- ✓ Self Contained Dower Unit
- ✓ Large Family Home

Accommodation

SUMMARY OF ACCOMMODATION

Entrance Hall: Lounge/Diner: Kitchen: Five
Bedrooms: Two Bathrooms: Self Contained Dower
Unit

ACCOMMODATION COMPRISES

Entrance Hall

22' x 8'. Max, under stairs storage.

Lounge

15'7" x 10'7".

Kitchen

13'8" x 9'8".

Bedroom 5

15'5" x 10'3".

Bedroom 4

18'6" x 10'8" x 8'2". Max.

Bathroom

9'2" x 6'.

FIRST FLOOR

Bedroom 1

22'7" x 10'8".

Bedroom 2

14'8" x 11'.

Bedroom 3

11'3" x 10'8".

Shower Room

7' x 7'.



Self Contained unit

Bedroom
9'8" x 9'7".

Shower Room
7'7" x 5'6".

Open Plan Living Space
16'9" x 9'7".

Further Information

SERVICES

Mains electricity and water and drainage. Electric Central heating.

PRICE INCLUDES

Floor coverings, curtains/blinds, and light fittings. Appliances as detailed.

POSSESSION

By arrangement.

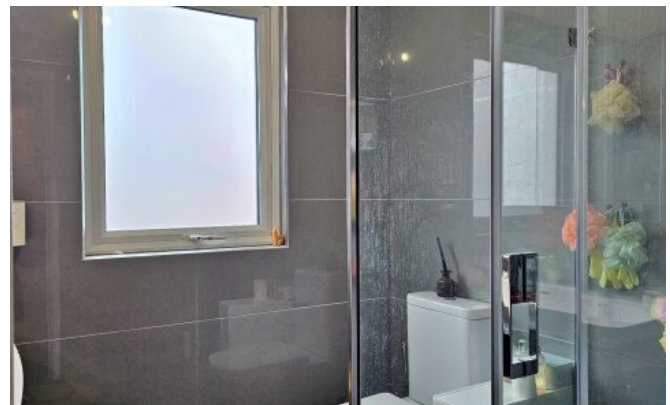
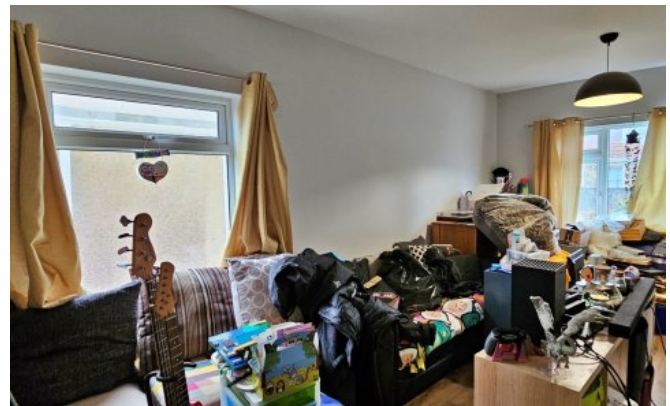
VIEWING

Strictly by appointment.

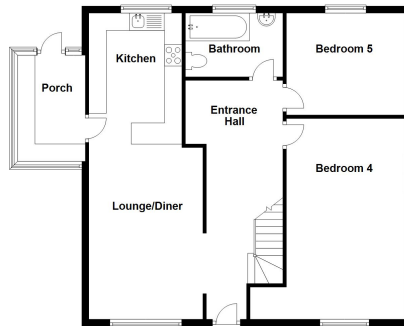
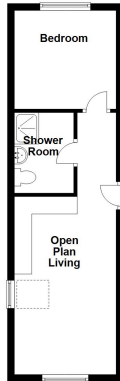
PLEASE NOTE

If the recipient of these details should be party to negotiations or actions which seek to preclude, or are contrary to, the interests of CRANFORDS ESTATE AGENCY LTD, as selling agents, they may be liable for any fees which would otherwise have been due to CRANFORDS ESTATE AGENCY LTD.

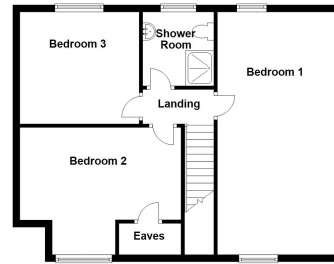
These particulars do not constitute any part of an offer or contract. No responsibility is accepted as to the accuracy of these particulars or statements made by our staff concerning the above property. Any intending purchaser must satisfy himself to the correctness of such statements and particulars. All negotiations to be conducted.



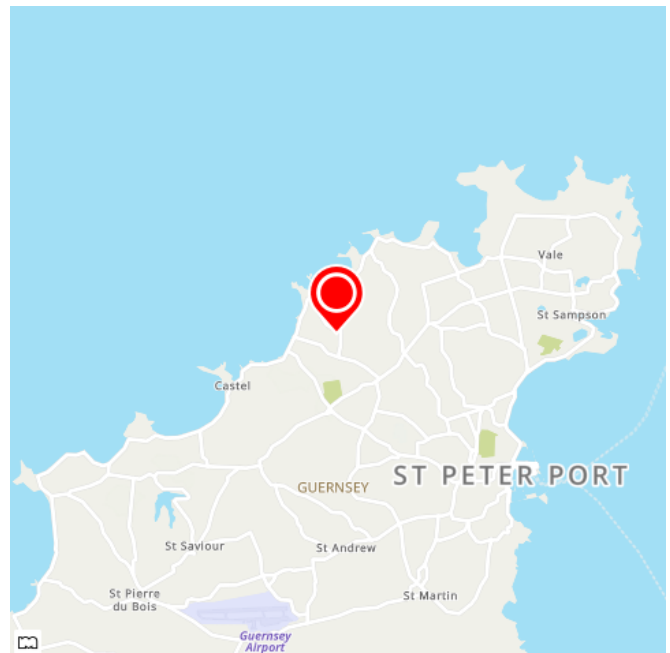
Ground Floor
Approx. 116.9 sq. metres (1258.1 sq. feet)



First Floor
Approx. 62.5 sq. metres (673.1 sq. feet)



Total area: approx. 179.4 sq. metres (1931.2 sq. feet)



For clarification we wish to inform prospective purchasers that these sales particulars have been prepared as a general guide. They are not an offer of contract, nor part of one. You should not rely on the content therein or on statements, in writing or by word of mouth, provided by us in respect of the property, its condition or its value. We have not undertaken a detailed survey, nor tested the services, appliances and specific fittings. Room sizes are approximate and should not be relied upon for carpets and furnishings. Cranfords Estate Agents Limited.

