

Lymehurst

St Martin



Nestled on the ever-popular La Rue Maze, just a short stroll from the heart of St Martin's village and only five minutes' drive to town, Lymehurst presents a rare opportunity to acquire a charming three to four-bedroom semi-detached home in a sought-after location. Upon entering the property, you're welcomed by a spacious entrance hall, which sets the tone for the generous proportions throughout. The bright and airy living room is perfect for relaxing or entertaining, while the adjacent dining room offers flexible use, easily adaptable as a fourth bedroom. To the rear, a beautifully renovated kitchen overlooks the garden and is fitted to a high standard, providing both style and functionality. Upstairs, the property offers three bedrooms, two generous doubles and a single room as well as a modern family bathroom. The property enjoys wraparound gardens, with a particularly deep rear garden providing excellent potential for extension (subject to permissions) or simply a spacious outdoor haven for family life. Early viewing is highly

- ✓ 3 Bedrooms
- ✓ Large Rooms
- ✓ Sought After Location
- ✓ No Onward Chain
- ✓ Good Sized Garden
- ✓ TRP 175
- ✓ 1 Bathroom
- ✓ Family Home
- ✓ Close To Local Amenities
- ✓ Scope To Extend
- ✓ LR3316

recommended to appreciate the full potential and charm of this delightful home.



Accommodation

Ground Floor

Entrance Hall

6' 0" x 29' 0" (1.83m x 8.84m)

Lounge

14' 4" x 14' 3" (4.37m x 4.34m)

Dining Room

13' 6" x 12' 3" (4.11m x 3.73m)

Kitchen

Appliances include AEG 4 ring hob, AEG single oven, AEG extractor fan, AEG microwave, AEG fridge/freezer, AEG washing machine & AEG dish washer.

11' 6" x 8' 9" (3.51m x 2.67m)



1st Floor

Landing

8' 10" x 23' 9" (2.69m x 7.24m)

WC

(NaNm x 1.40m)

3' " x 4' 7"

Bathroom



7' 8" x 8' 8" (2.34m x 2.64m)

Bedroom 1

12' 2" x 13' 6" (3.71m x 4.11m)

Bedroom 2

12' 3" x 13' 2" (3.73m x 4.01m)

Bedroom 3

6' 9" x 8' 7" (2.06m x 2.62m)

Services

Mains water, electricity and drainage. Electric night storage central heating.

Price Includes

Floor coverings, curtains/blinds, appliances and light fittings. Appliances as detailed.

Possession

By Arrangement

Viewing

Strictly By Appointment

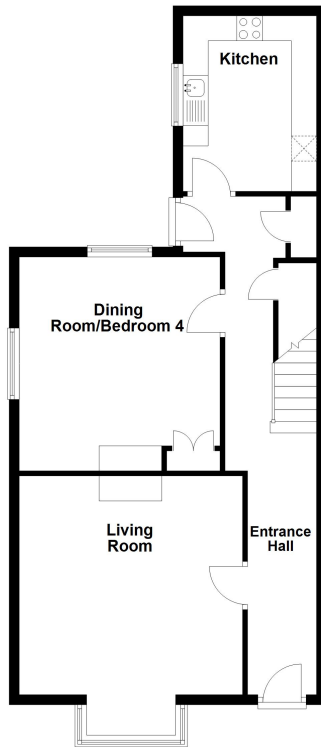
Please Note

If the recipient of these details should be party to negotiations or actions which seek to preclude, or are contrary to, the interests of CRANFORDS ESTATE AGENCY LTD, as selling agents, they may be liable for any fees which would otherwise have been due to CRANFORDS ESTATE AGENCY LTD.

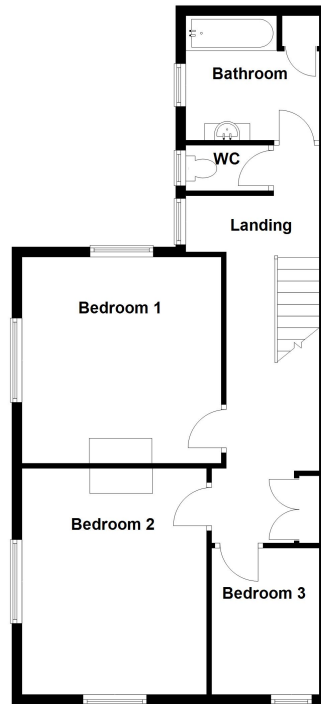
These particulars do not constitute any part of an offer or contract. No responsibility is accepted as to the accuracy of these particulars or statements made by our staff concerning the above property. Any intending purchaser must satisfy himself to the correctness of such statements and particulars. All negotiations to be conducted.



Ground Floor



First Floor



For clarification we wish to inform prospective purchasers that these sales particulars have been prepared as a general guide. They are not an offer of contract, nor part of one. You should not rely on the content therein or on statements, in writing or by word of mouth, provided by us in respect of the property, its condition or its value. We have not undertaken a detailed survey, nor tested the services, appliances and specific fittings. Room sizes are approximate and should not be relied upon for carpets and furnishings. Cranfords Estate Agents Limited.



