

Carrera

Vale



Cranfords is delighted to offer Carrera to the local market positioned in the convenient location of The Bridge and all of the amenities available. This immaculate family home offers large, bright and airy accommodation with 3 double bedrooms and plenty of scope to increase the accommodation if required. This pristine property has had a number of upgrades over recent years including the addition of a triple garage that is useful from a multitude of possibilities including and not limited to an annex or wing, an Air Bnb with the relevant permissions, or simply like the current owner, a fantastic space for collectable toys. The main house comprises of a generous sitting room and dining area, a bright and airy kitchen and dining area, downstairs double bedroom and separate WC and a family bathroom on the ground floor with a further 2 bedrooms including a large master bedroom residing on the 1st floor. This really is a fantastic property and must be seen to fully appreciate everything that is on offer.

- ✓ 3 Bedrooms
- ✓ 2 Bathrooms
- ✓ Generous Living Space
- ✓ Sunny Rear Garden
- ✓ Triple Garage & Utility
- ✓ Short Stroll To The Bridge
- ✓ Potential To Extend
- ✓ Great Eaves Storage
- ✓ LR3280
- ✓ TRP 259

Accommodation

Ground Floor

Entrance Hall

19' 6" x 5' 8" (5.94m x 1.73m)

Living Room

18' 1" x 12' 0" (5.51m x 3.66m)

Dining Area

12' 4" x 11' 7" (3.76m x 3.53m)

Kitchen/Diner

21' 9" x 11' 5" (6.63m x 3.48m)

Seperate W/C

6' 0" x 2' 8" (1.83m x 0.81m)

Bathroom

12' 4" x 11' 7" (3.76m x 3.53m)

Bedroom 2

12' 5" x 11' 0" (3.78m x 3.35m)

First Floor

Bedroom 1

Fitted Wardrobe

16' 9" x 16' 8" (5.11m x 5.08m)

Shower Room

5' 5" x 4' 3" (1.65m x 1.30m)

Bedroom 3

18' 6" x 10' 3" (5.64m x 3.12m)

Exterior

Triple Garage

26' 7" x 17' 3" (8.10m x 5.26m)



Utility

13' 6" x 13' 0" (4.11m x 3.96m)

services

Mains electricity and water and drainage.
Heating.

price includes

Floor coverings, curtains/blinds, and light fittings. Appliances as detailed.

possession

By arrangement.

viewing

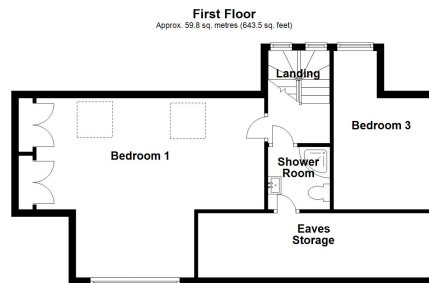
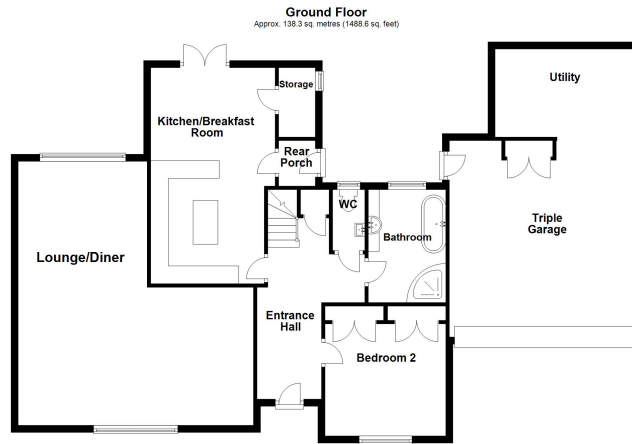
Strictly by appointment.

please note

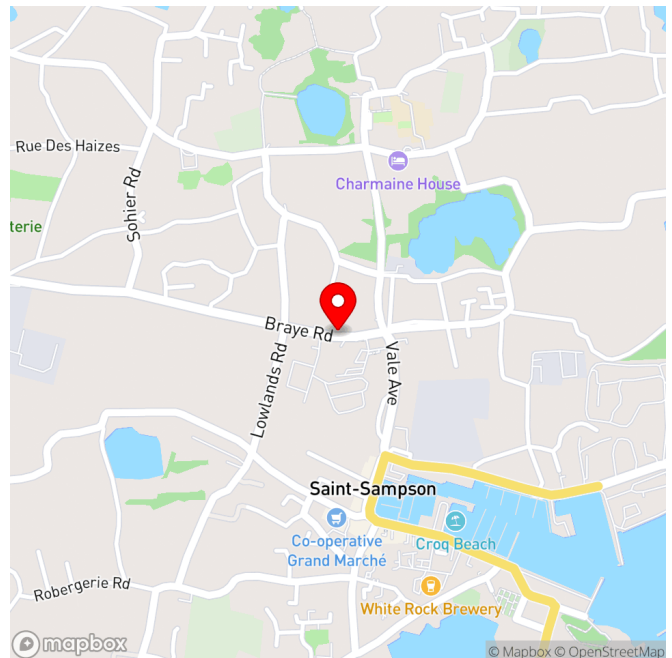
If the recipient of these details should be party to negotiations or actions which seek to preclude, or are contrary to, the interests of CRANFORDS ESTATE AGENCY LTD, as selling agents, they may be liable for any fees which would otherwise have been due to CRANFORDS ESTATE AGENCY LTD.

These particulars do not constitute any part of an offer or contract. No responsibility is accepted as to the accuracy of these particulars or statements made by our staff concerning the above property. Any intending purchaser must satisfy himself to the correctness of such statements and particulars. All negotiations to be conducted.





Total area: approx. 198.1 sq. metres (2132.1 sq. feet)



For clarification we wish to inform prospective purchasers that these sales particulars have been prepared as a general guide. They are not an offer of contract, nor part of one. You should not rely on the content therein or on statements, in writing or by word of mouth, provided by us in respect of the property, its condition or its value. We have not undertaken a detailed survey, nor tested the services, appliances and specific fittings. Room sizes are approximate and should not be relied upon for carpets and furnishings. Cranfords Estate Agents Limited.





