

Manhattan

St Sampson



Ideally located on Rue des Monts, just a stone's throw from the picturesque Delancey Park and a short stroll to the Bridge, this substantial semi-detached home offers generous living space across three floors. To the front of the property, there is private off-street parking for one vehicle, in addition to ample on-street parking nearby. Upon entering, you're welcomed by a warm and inviting family home atmosphere. The ground floor comprises a bright living room with a stylish working fireplace, a dining area with sliding doors opening onto a low-maintenance garden and workshop, a well-equipped kitchen, a convenient downstairs W/C, and a utility cupboard. The first floor hosts four well-proportioned bedrooms, all capable of accommodating double beds, alongside a family bathroom with a separate W/C. The top floor is dedicated to a spacious master bedroom, complete with fitted wardrobes, an en-suite shower room, and beautiful elevated views across Delancey Park. Early viewing is highly recommended to fully appreciate all

- ✓ 5 Bedrooms
- ✓ Ideal Family Home
- ✓ Scope To Create Extra Parking
- ✓ TRP 256
- ✓ Separate Ground Floor W/C
- ✓ LR3322
- ✓ 2 Bathrooms
- ✓ Move-in Condition
- ✓ Beautiful Views Over Delancey Park
- ✓ Few Minutes Walk To The Bridge
- ✓ Generous Bedroom Sizes

that Manhattan has to offer.



Accommodation

Ground Floor

Entrance Hall

Max

14' 5" x 12' 0" (4.39m x 3.66m)

Living Room

19' 0" x 18' 0" (5.79m x 5.49m)

Dining Area

Kitchen

Appliances include Belling 4 ring hob, Whirlpool oven, Candy washing machine, Hotpoint tumble dryer, Hotpoint dish washer, Hoover fridge/freezer & Belling extractor fan.

11' 5" x 11' 0" (3.48m x 3.35m)

Separate W/C

6' 0" x 2' 5" (1.83m x 0.74m)

Utility

First Floor

Bedroom 5

10' 0" x 8' 0" (3.05m x 2.44m)



Bedroom 4

11' 0" x 9' 5" (3.35m x 2.87m)

Bedroom 3

11' 0" x 8' 0" (3.35m x 2.44m)

Bedroom 2

15' 0" x 11' 0" (4.57m x 3.35m)

Bathroom

8' 0" x 5' 0" (2.44m x 1.52m)

Separate W/C

8' 0" x 3' 0" (2.44m x 0.91m)

Second Floor

Master Bedroom

20' 0" x 20' 0" (6.10m x 6.10m)

En-Suite Bathroom

8' 0" x 6' 0" (2.44m x 1.83m)

Services

Mains electricity, water and drainage. Gas central heating.

Price Includes

Floor coverings, curtains/blinds, appliances as listed and light fittings.

Possession

By arrangement.

Viewing

Strictly by appointment.

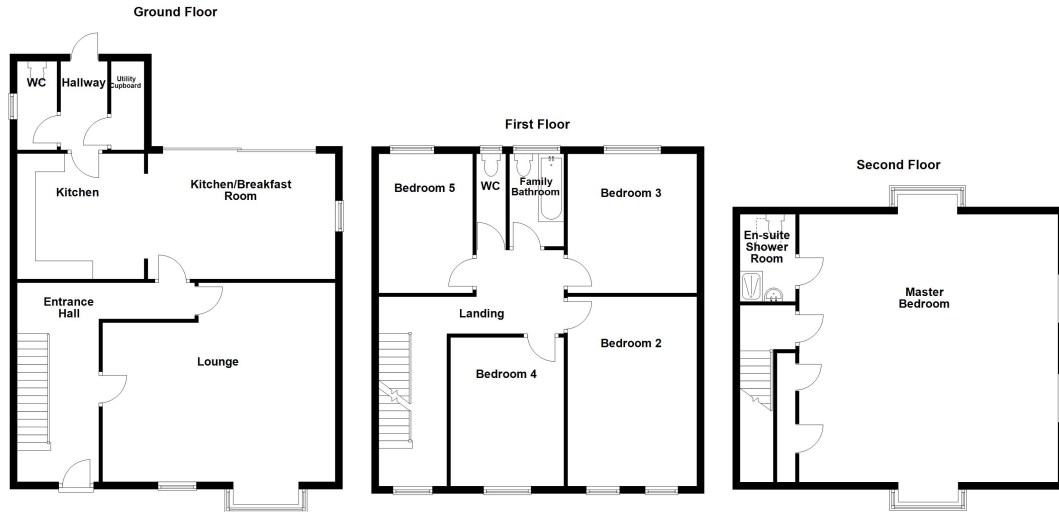
Please Note



If the recipient of these details should be party to negotiations or actions which seek to preclude, or are contrary to, the interests of CRANFORDS ESTATE AGENCY LTD, as selling agents, they may be liable for any fees which would otherwise have been due to CRANFORDS ESTATE AGENCY LTD.

These particulars do not constitute any part of an offer or contract. No responsibility is accepted as to the accuracy of these particulars or statements made by our staff concerning the above property. Any intending purchaser must satisfy himself to the correctness of such statements and particulars. All negotiations to be conducted.





For clarification we wish to inform prospective purchasers that these sales particulars have been prepared as a general guide. They are not an offer of contract, nor part of one. You should not rely on the content therein or on statements, in writing or by word of mouth, provided by us in respect of the property, its condition or its value. We have not undertaken a detailed survey, nor tested the services, appliances and specific fittings. Room sizes are approximate and should not be relied upon for carpets and furnishings. Cranfords Estate Agents Limited.



