

The Cottage

Vale



Cranfords are delighted to present The Cottage to the local market. This charming two-bedroom cottage is tucked away in a quiet lane, yet conveniently close to a range of local amenities. Immaculately presented and in true move-in condition throughout, this delightful cottage offers a perfect blend of modern comfort and character. Upon arrival, the property offers parking for one to two vehicles (subject to size). Stepping inside, you're welcomed into a beautifully upgraded open-plan living area, featuring a brand-new kitchen complete with modern appliances, all thoughtfully installed by the current owners. Upstairs, the first floor comprises a spacious double bedroom, a stylish bathroom, and a versatile additional room ideal as a second bedroom or nursery. To the rear, the property boasts a low-maintenance patio garden, perfect for relaxing or entertaining, along with a block-built shed that conveniently doubles as a utility space. This unique property is an ideal home for first-time buyers, downsizers, or those seeking a

- ✓ 2 Bedrooms
 - ✓ 1 Bathroom
 - ✓ Newly Renovated By Current Owners
 - ✓ First Floor Nursery/Study
 - ✓ Parking for 1 Vehicle
 - ✓ Enclosed Rear Garden With Block Built Shed
 - ✓ Chain Free
 - ✓ Perfect First Time Buy or Downsize
 - ✓ Fully Rewired & Plumbed in 2025
 - ✓ Brand New Kitchen & Bathroom
 - ✓ TRP TBC
 - ✓ LR3332
 - ✓ What3Words
- ///incoming.watch

lock-up-and-leave. Early viewing is highly recommended.



Accommodation

Ground Floor

Lounge/Diner

Max.

14' 0" x 14' 0" (4.27m x 4.27m)

Kitchen

Appliances include Beko electric 4 ring hob, Beko Oven & Grill, Beko Fridge, Beko dishwasher & Zanussi washing machine.

12' 0" x 9' 0" (3.66m x 2.74m)

First Floor

Bedroom 1

Max.

14' 0" x 11' 10" (4.27m x 3.61m)

Bathroom

Max.

8' 4" x 5' 6" (2.54m x 1.68m)

Bedroom 2/Nursery

Max.

11' 3" x 8' 7" (3.43m x 2.62m)

Exterior

Shed

Appliances include tumble dryer

Services

Mains electricity, water and drainage. Electric central heating.

Price Includes

Floor coverings, curtains/blinds, appliances as listed and light fittings.

Possession

By arrangement.

Viewing

Strictly by appointment.

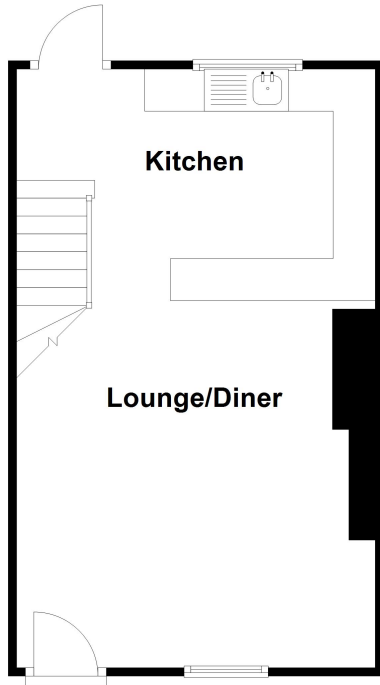
Please Note

-
If the recipient of these details should be party to negotiations or actions which seek to preclude, or are contrary to, the interests of CRANFORDS ESTATE AGENCY LTD, as selling agents, they may be liable for any fees which would otherwise have been due to CRANFORDS ESTATE AGENCY LTD.

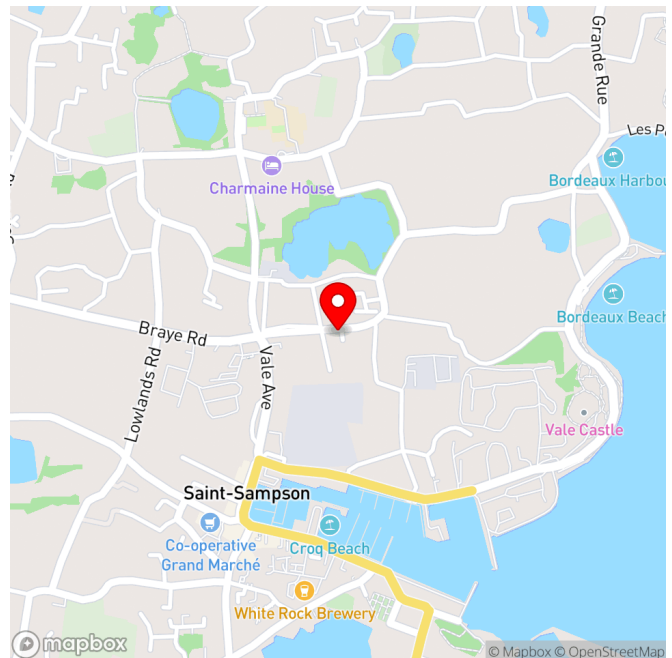
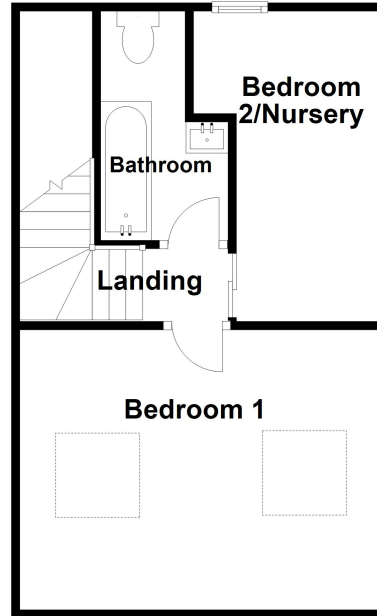
These particulars do not constitute any part of an offer or contract. No responsibility is accepted as to the accuracy of these particulars or statements made by our staff concerning the above property. Any intending purchaser must satisfy himself to the correctness of such statements and particulars. All negotiations to be conducted.



Ground Floor



First Floor



For clarification we wish to inform prospective purchasers that these sales particulars have been prepared as a general guide. They are not an offer of contract, nor part of one. You should not rely on the content therein or on statements, in writing or by word of mouth, provided by us in respect of the property, its condition or its value. We have not undertaken a detailed survey, nor tested the services, appliances and specific fittings. Room sizes are approximate and should not be relied upon for carpets and furnishings. Cranfords Estate Agents Limited.

