

## Bamba Zonke

## Forest



Cranfords are delighted to bring Bamba Zonke to the local market. This unique and beautifully maintained three-bedroom bungalow is tucked away in a quiet lane just off La Route de Farras, offering a peaceful setting while remaining nearby many local amenities and Forest School, this property is also in the catchment area of La Hougette Primary School giving the option of either school to a new owner. Presented to an exceptional standard throughout, the property offers spacious and versatile accommodation, thoughtfully arranged to maximise both comfort and practicality. Upon entering, you are welcomed by a generous entrance hall, with the bedroom accommodation and bathrooms situated to one side and the living areas to the other, creating a well-balanced and functional layout. All three bedrooms are comfortable double bedrooms, providing generously sized accommodation for family members and guests alike. Two of the bedrooms benefit from en-suite shower rooms and both feature

- ✔ 3 Bedrooms
- ✔ 3 Bathrooms
- ✔ Characterful Property Throughout
- ✔ Good Sized Garage
- ✔ Double Garage
- ✔ Ample Parking
- ✔ Beautiful Rear Grass Garden & Patio
- ✔ Amenities & School Within Walking Distance
- ✔ Situated In A Quiet Lane
- ✔ Chain Free
- ✔ Move In Condition Throughout
- ✔ TRP 205

double doors opening directly onto the garden, allowing natural light to flood the rooms and creating a wonderful connection to the outdoor space. The spacious lounge is accessed via a small staircase from the entrance hall, offering an inviting and private setting for both relaxation and entertaining. The dining room enjoys direct access to the garden through sliding doors and serves as an excellent space for family gatherings and social occasions. Stairs rise from the dining area to a useful snug or study, providing the ideal space for those working from home, a children's playroom, or an additional reception area. Beyond double doors from the dining room, the kitchen is bright and welcoming, with an abundance of natural light flowing through the adjoining living spaces to create an airy and open atmosphere throughout the home. Externally, the property continues to impress with ample parking to the front, complemented by a large double garage providing excellent storage and workshop potential. To the rear, the enclosed garden is predominantly laid to lawn and patio, offering an ideal space for outdoor entertaining, gardening, and family enjoyment, while a greenhouse further enhances the appeal for keen gardeners. A rare and highly attractive opportunity in a sought-after location, viewing is highly recommended to fully appreciate everything that Bamba Zonke has to offer.



## Accommodation

### Ground Floor

#### Entrance Hall

Max.

22' 4" x 10' 4" (6.81m x 3.15m)

#### Family Bathroom

6' 9" x 5' 6" (2.06m x 1.68m)

#### Bedroom 3

11' 5" x 10' 7" (3.48m x 3.23m)

#### Bedroom 1

16' 1" x 11' 2" (4.90m x 3.40m)

#### En-Suite Shower Room

7' 9" x 6' 2" (2.36m x 1.88m)

#### Bedroom 2

11' 5" x 10' 7" (3.48m x 3.23m)

#### En-Suite Shower Room

Max.

9' 5" x 5' 0" (2.87m x 1.52m)

#### Lounge

16' 0" x 14' 1" (4.88m x 4.29m)

#### Dining Room

16' 0" x 14' 1" (4.88m x 4.29m)

#### Study

14' 8" x 12' 2" (4.47m x 3.71m)

#### Kitchen

Appliances include Zanussi 4 ring electric hob, Neff oven, New World extractor fan, washing machine, tumble dryer, Neff dish washer, Hotpoint fridge & Hotpoint freezer.

17' 5" x 9' 8" (5.31m x 2.95m)



**Garage**

Appliances include washing machine & tumble dryer.  
18' 2" x 16' 0" (5.54m x 4.88m)

**Services**

Mains electricity, water and drainage. Oil central heating.

**Price Includes**

Floor coverings, curtains/blinds, appliances as listed and light fittings.

**Possession**

By arrangement.

**Viewing**

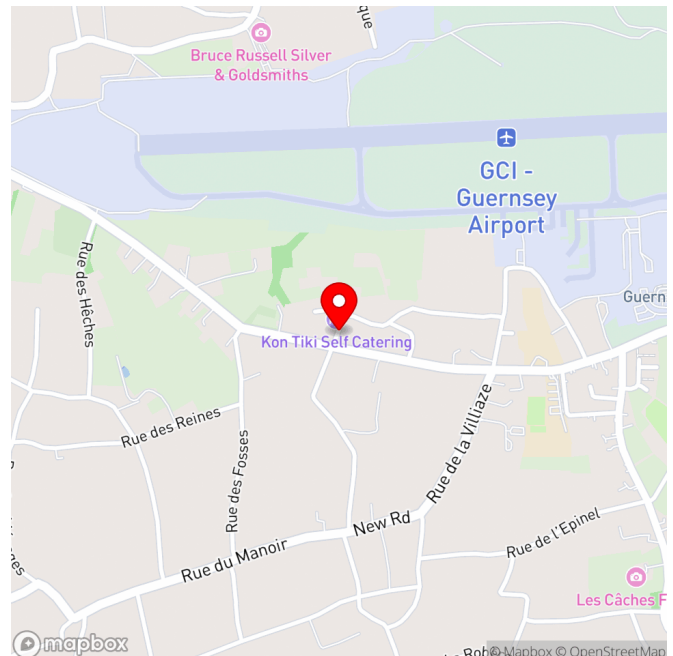
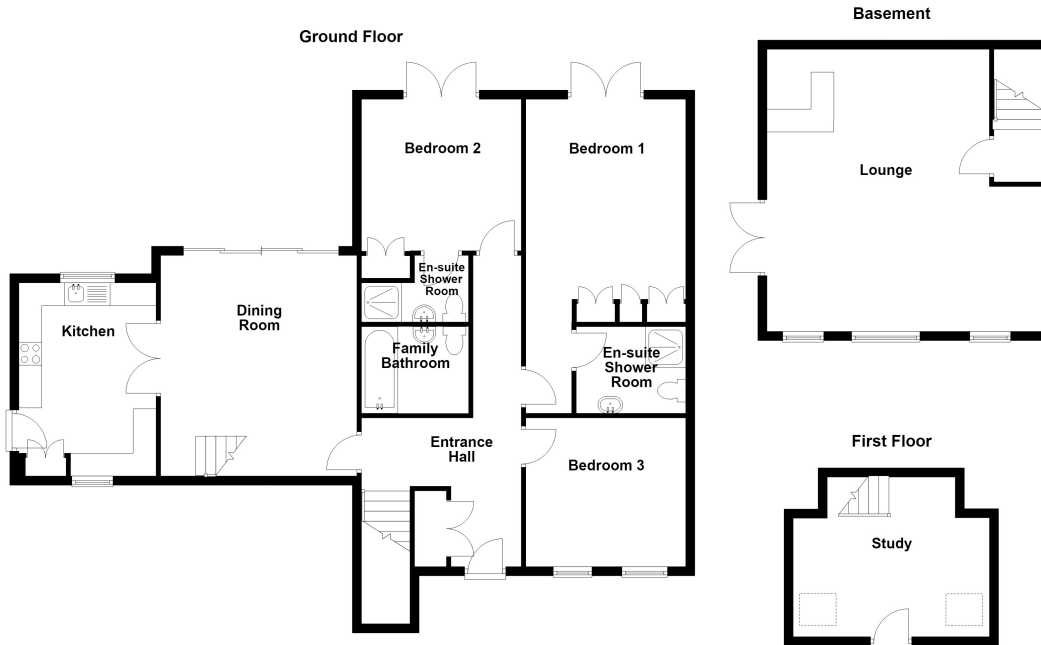
Strictly by appointment.

**Please Note**

-  
If the recipient of these details should be party to negotiations or actions which seek to preclude, or are contrary to, the interests of CRANFORDS ESTATE AGENCY LTD, as selling agents, they may be liable for any fees which would otherwise have been due to CRANFORDS ESTATE AGENCY LTD.

These particulars do not constitute any part of an offer or contract. No responsibility is accepted as to the accuracy of these particulars or statements made by our staff concerning the above property. Any intending purchaser must satisfy himself to the correctness of such statements and particulars. All negotiations to be conducted.





For clarification we wish to inform prospective purchasers that these sales particulars have been prepared as a general guide. They are not an offer of contract, nor part of one. You should not rely on the content therein or on statements, in writing or by word of mouth, provided by us in respect of the property, its condition or its value. We have not undertaken a detailed survey, nor tested the services, appliances and specific fittings. Room sizes are approximate and should not be relied upon for carpets and furnishings. Cranfords Estate Agents Limited.





