

£425,000
Freehold



Cranford's
Estate Agents



Features

- TRP 64
- short stroll to the town centre
- True Move-in Condition
- On Street Parking Nearby
- Ideal FTB or Buy To Let
- Front gravel garden and shed
- Rooftop Views

Summary of Property

Welcome to Lavender House, a charming and thoughtfully designed one-bedroom, one-bathroom home that's perfect for single professionals or couples seeking a cosy and comfortable home. Nestled just a stone's throw from the heart of town, this delightful home offers the best of both worlds, peace and privacy with easy access to local amenities. Step outside to enjoy the inviting front garden, ideal for morning coffee or evening relaxation. Whether you're a first-time buyer, downsizing, or simply looking for a quiet retreat, Lavender House combines warmth, convenience, and charm in one irresistible package. Early viewing highly recommended!

Room Descriptions

Ground floor

Lounge-diner

15' 7" x 15' 0" (4.75m x 4.57m)

Kitchen

15' 5" x 3' 7" (4.70m x 1.09m) Appliances - 4 ring electric schott ceran hob, single electric oven, Hoover washing machine, Hoover fridge + freezer & Neff cooker hood.

First floor

Bathroom

5' 4" x 6' 6" (1.63m x 1.98m)

Bedroom

16' 1" x 12' 9" (4.90m x 3.89m)

With fitted wardrobes

Services

Mains water, drains & electric. Electric Central heating.

Prices Includes

Floor coverings and light fittings. Appliances as detailed.

Possession

By arrangement.

Viewing

Strictly by appointment.

-

If the recipient of these details should be party to negotiations or actions which seek to preclude, or are contrary to, the interests of CRANFORDS ESTATE AGENCY LTD, as selling agents, they may be liable for any fees which would otherwise have been due to CRANFORDS ESTATE AGENCY LTD.

These particulars do not constitute any part of an offer or contract. No responsibility is accepted as to the accuracy of these particulars or statements made by our staff concerning the above property. Any intending purchaser must satisfy himself to the correctness of such statements and particulars. All negotiations to be conducted.



Material Information

Parking Types: None.

Heating Sources: Electric.

Electricity Supply: Mains Supply.

Water Supply: Mains Supply.

Sewerage: Mains Supply.

Broadband Connection Types: None.

Accessibility Types: None.

Has the property been flooded in last 5 years? No

Flooding Sources:

Any flood defences at the property? No

Any risk of coastal erosion? No

Is the property listed? No

Are there any restrictions associated with the property? No

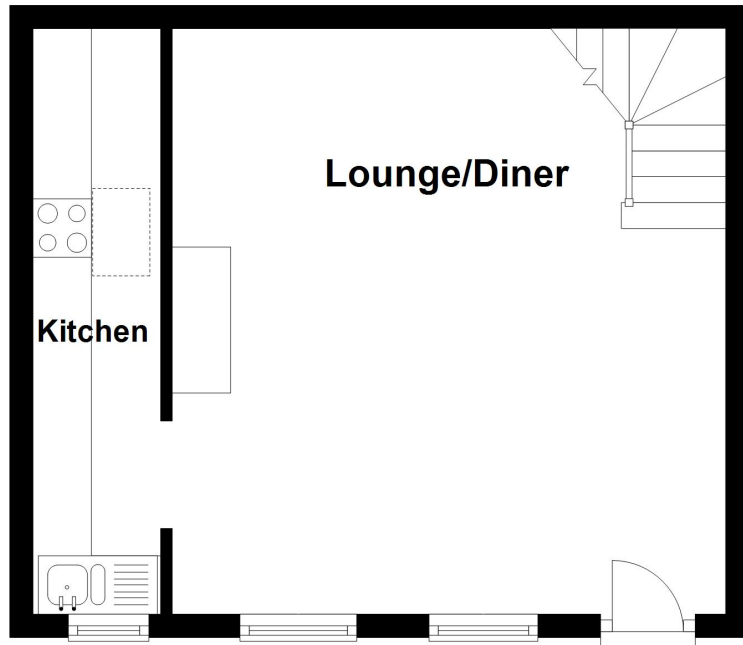
Any easements, servitudes, or wayleaves? No

The existence of any public or private right of way? No

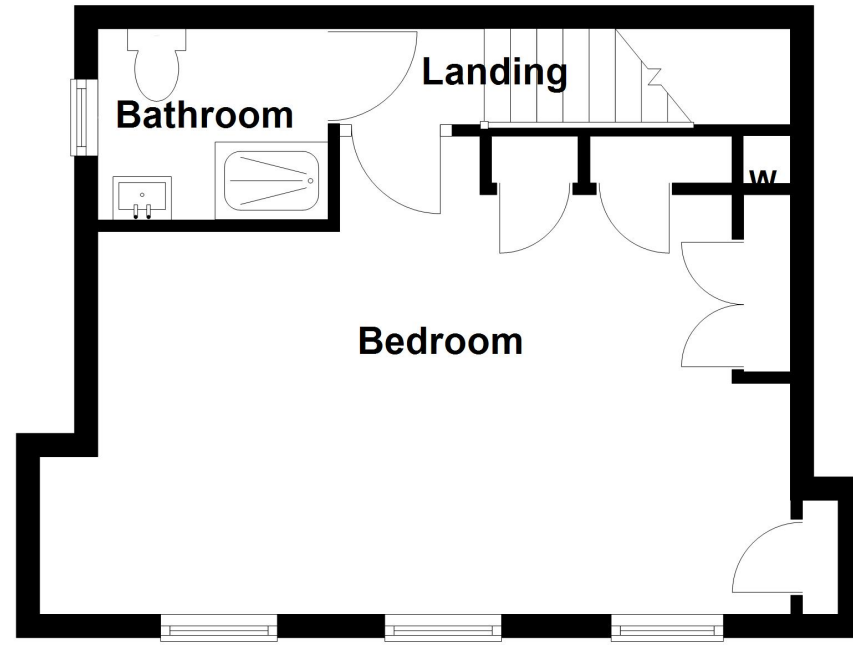


Floorplan

Ground Floor



First Floor



PLEASE NOTE:

If the recipient of these details should be party to negotiations or actions which seek to preclude, or are contrary to, the interests of CRANFORDS ESTATE AGENCY LTD, as selling agents, they may be liable for any fees which would otherwise have been due to CRANFORDS ESTATE AGENCY LTD. These particulars do not constitute any part of an offer or contract. No responsibility is accepted as to the accuracy of these particulars or statements made by our staff concerning the above property. Any intending purchaser must satisfy himself to the correctness of such statements and particulars. All negotiations to be conducted.

1, Westerbrook, Southside, GY2 4QQ 01481 243878 sales@cranfords.co.uk